



Kurzbedienungsanleitung - Short operating instructions

Software - Update BM-2



Durch den Betriebsschalter EIN/AUS am Gerät erfolgt keine Netztrennung!
Gefahr durch elektrische Spannung an elektrischen Bauteilen. Greifen Sie niemals an elektrische Bauteile und Kontakte, wenn das Gerät nicht vom Netz getrennt ist. Es besteht Lebensgefahr!

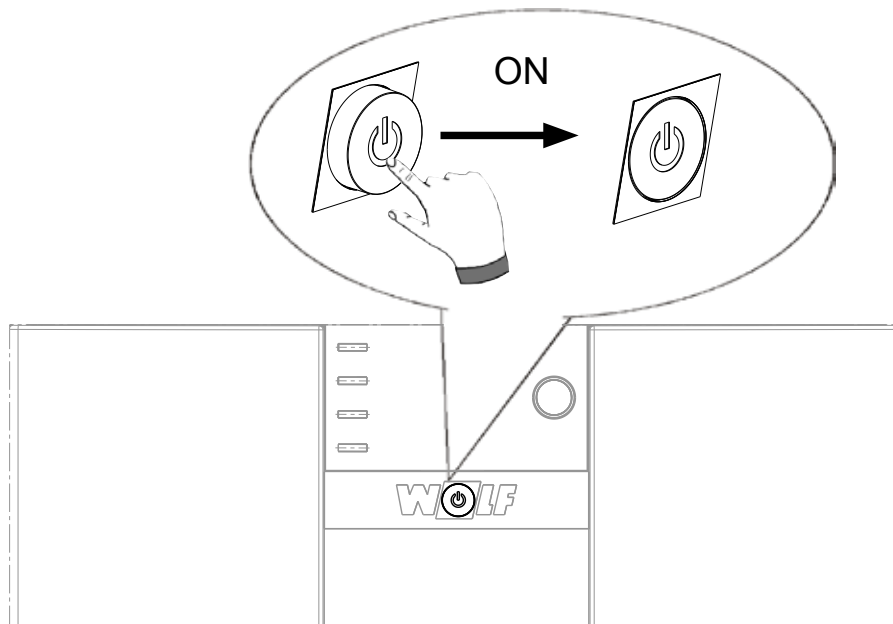
Arbeiten an elektrischen Bauteilen dürfen nur von einem zugelassenen Fachmann durchgeführt werden.



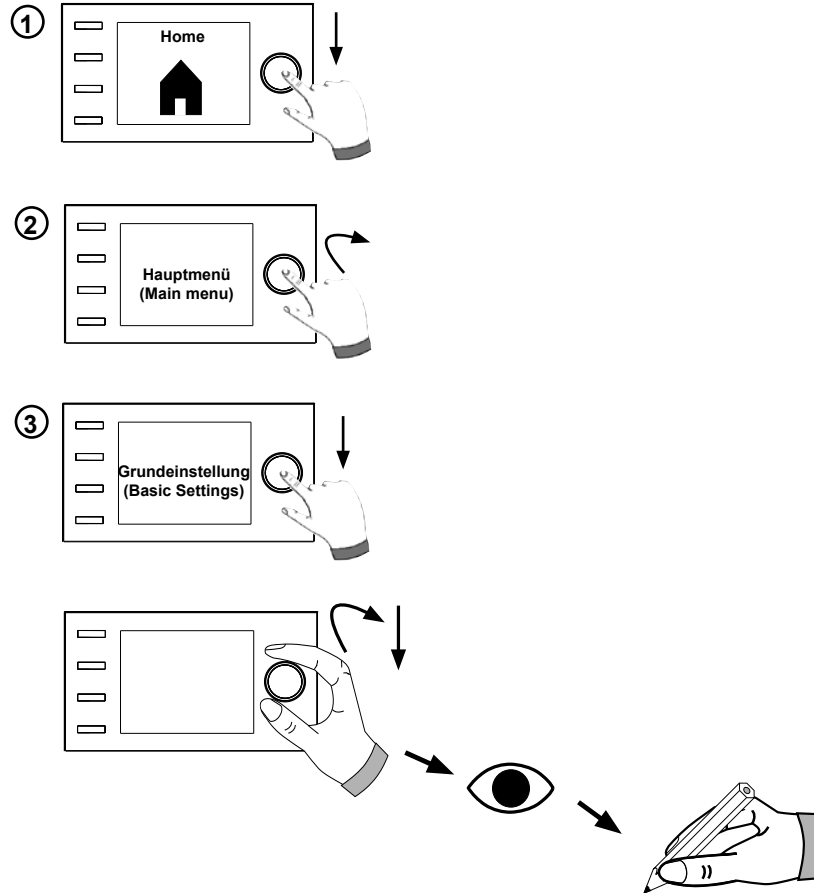
The unit is not isolated from the mains by the ON/OFF switch on the unit!
Danger through 'live' electrical components. Never touch electrical components and contacts if the unit is not isolated from the mains supply. Mortal danger!

Only qualified persons are permitted to work on electrical components.

①



2



Grundeinstellungen / Basic Settings



Einstellungen Heizkreis -
Default settings for
heating circuit

Sparfaktor / Tagtemperatur -
Economy factor / Day temperature

Raumeinfluss -
Room influence

Winter-/ Sommer Umschaltung -
Winter/summer changeover

ECO/ABS

Einstellungen Mischerkreis 1 -
Default settings for
mixer circuit 1

Sparfaktor / Tagtemperatur -
Economy factor / Day temperature

Raumeinfluss -
Room influence

Winter-/ Sommer Umschaltung
Winter/summer changeover

ECO/ABS

Einstellungen Mischerkreis 2 -
Default settings for
mixer circuit 2

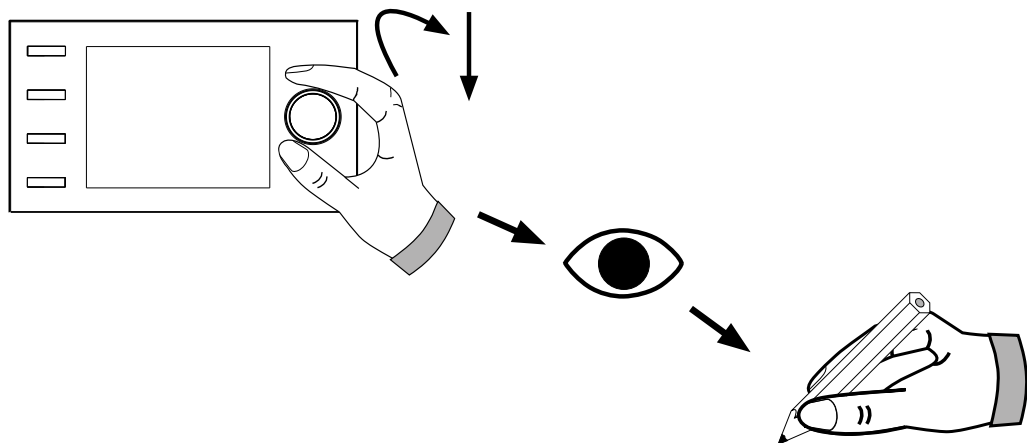
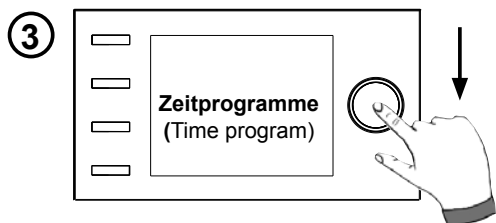
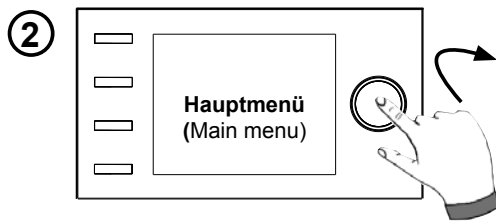
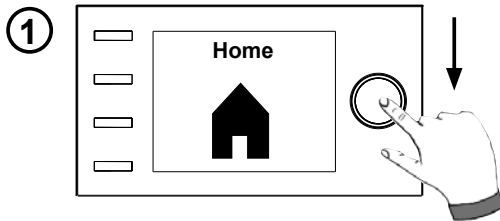
Sparfaktor / Tagtemperatur -
Economy factor / Day temperature

Raumeinfluss -
Room influence

Winter-/ Sommer Umschaltung -
Winter/summer changeover

ECO/ABS

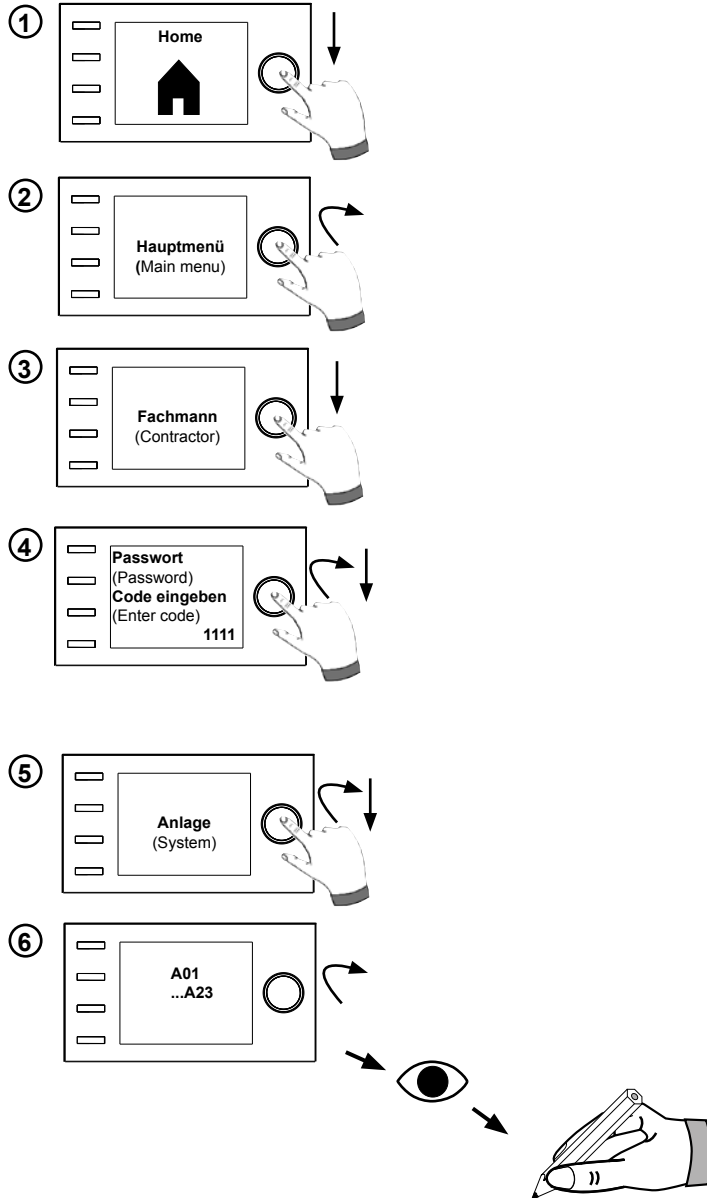
3




Zeitprogramm	Tag	Schaltzeit	HK		Mischer		Warmwasser		Zirkulation		Lüftung		
			EIN	AUS	EIN	AUS	EIN	AUS	EIN	AUS	EIN	AUS	
frei programmiertes Zeitprogramm	Mo	1											
		2											
		3											
	Di	1											
		2											
		3											
	Mi	1											
		2											
		3											
	Do	1											
		2											
		3											
	Fr	1											
		2											
		3											
	Sa	1											
		2											
		3											
	So	1											
		2											
		3											

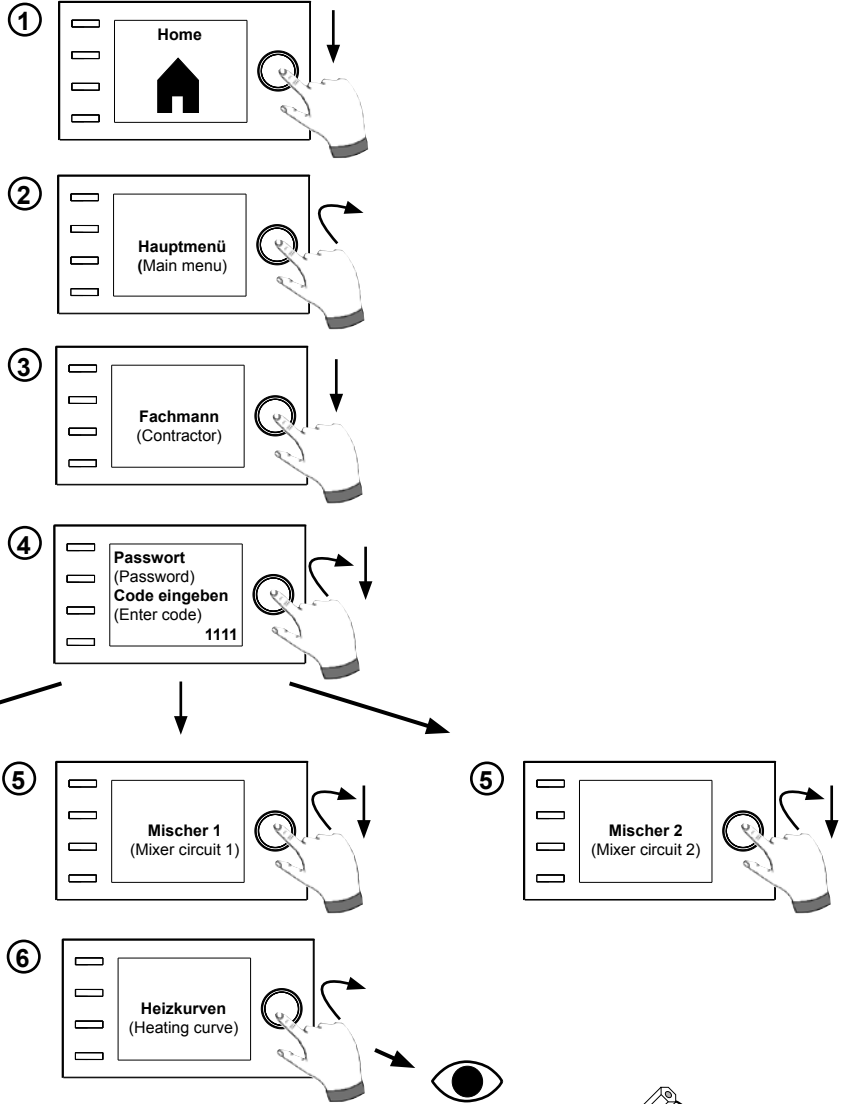
Time program	Day	Switching time	HC		Mixer		DHW		DHW circulation		Ventilation		
			ON	OFF	ON	OFF	ON	OFF	ON	OFF	ON	OFF	
Freely programmed time program	Mo	1											
		2											
		3											
	Tu	1											
		2											
		3											
	Me	1											
		2											
		3											
	Th	1											
		2											
		3											
	Fr	1											
		2											
		3											
	Sa	1											
		2											
		3											
	Su	1											
		2											
		3											

4



Parameter	Werkseinstellung - Factory setting	
	Anlage - System	
A00	4 K/K	
A04	3 h	
A07	Aus - OFF	
A09	+2 °C	
A10	0	
A11	Aus - OFF	
A12	-16 °C	
A13	45 °C	
A17	30 000	
A18	50	
A23	18:00	

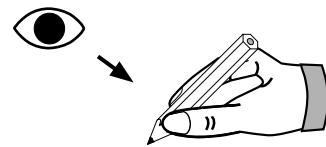
5



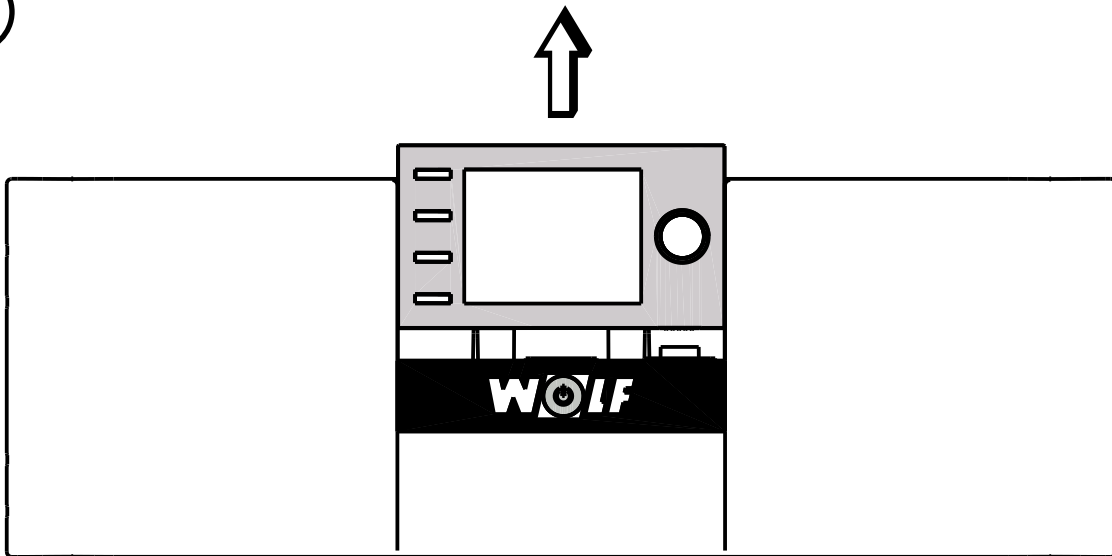
Heizkurve - Heating curve	Werkseinstellung - Factory setting	Heizkreis - Heating circuit
Sockeltemperatur - Low end temperature	30 °C	
Startpunkt Heizkurve - Heating curve start point	20 °C	
Normaußentemperatur - Standard outside temperature	-16 °C	
Vorlauftemperatur - Flow temperature	65 °C	

Heizkurve - Heating curve	Werkseinstellung - Factory setting	Mischer 1 - Mixer circuit 1
Sockeltemperatur - Low end temperature	20 °C	
Startpunkt Heizkurve - Heating curve start point	20 °C	
Normaußentemperatur - Standard outside temperature	-16 °C	
Vorlauftemperatur - Flow temperature	45 °C	

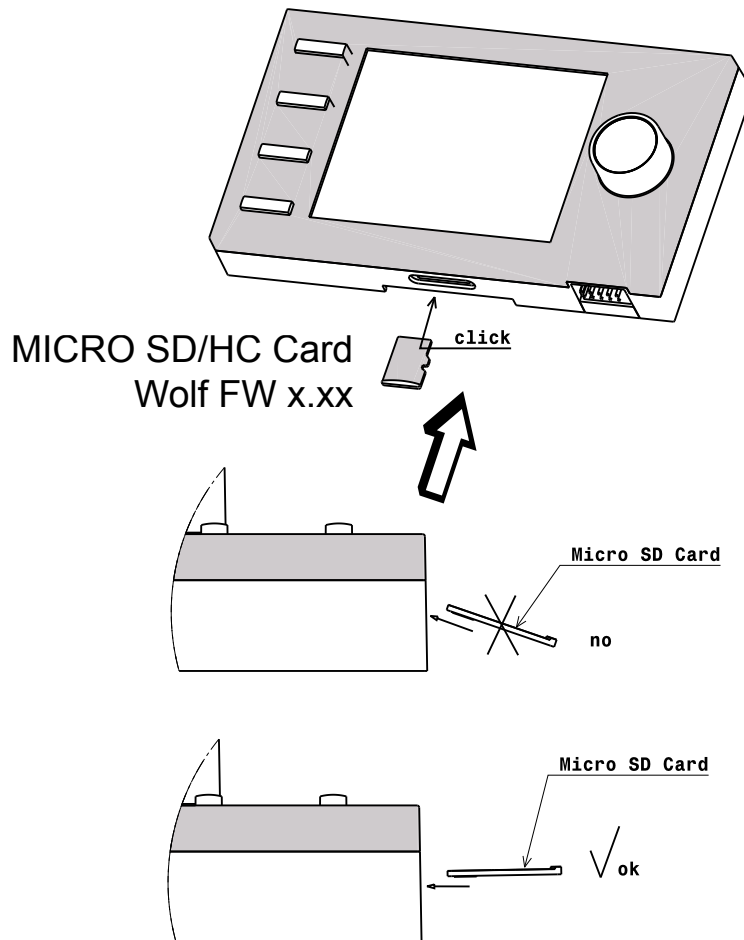
Heizkurve - Heating curve	Werkseinstellung - Factory setting	Mischer 2 - Mixer circuit 2
Sockeltemperatur - Low end temperature	20 °C	
Startpunkt Heizkurve - Heating curve start point	20 °C	
Normaußentemperatur - Standard outside temperature	-16 °C	
Vorlauftemperatur - Flow temperature	45 °C	



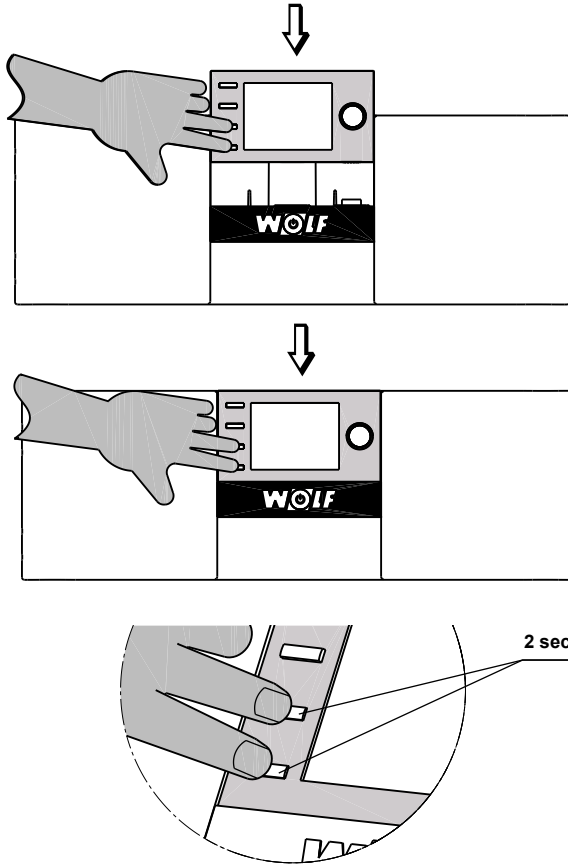
6



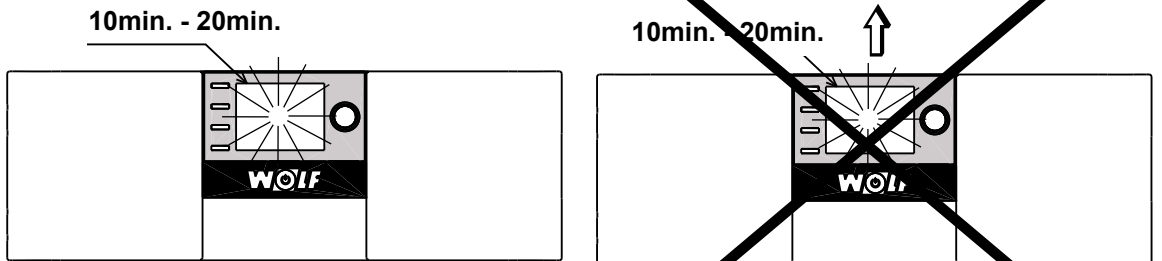
7



8

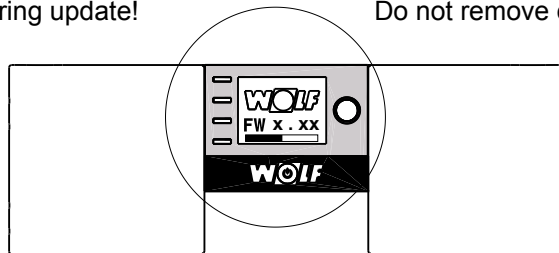


9

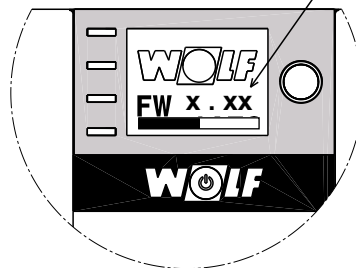


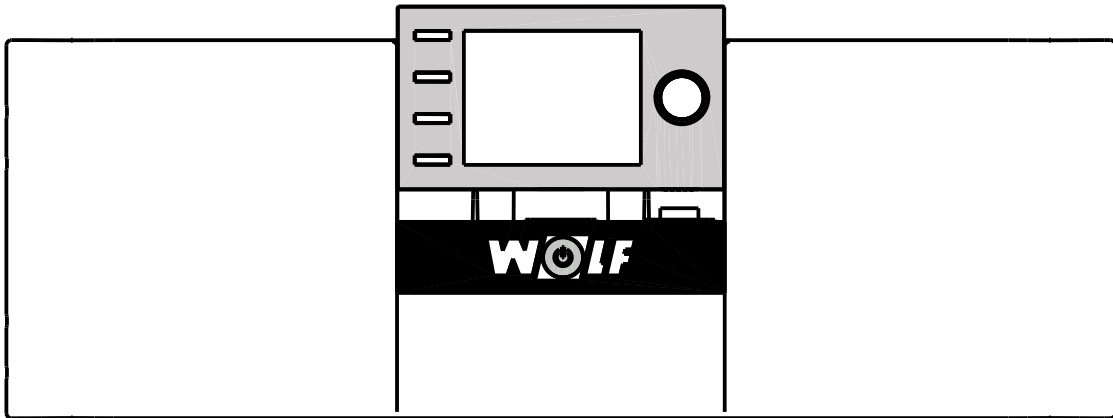
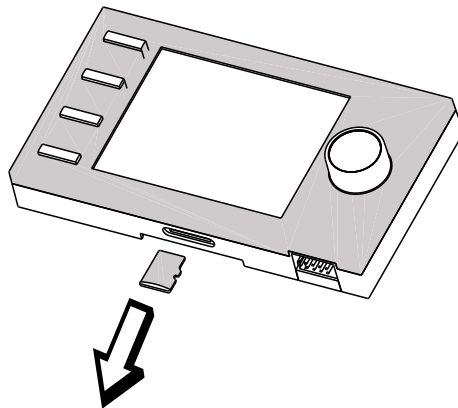
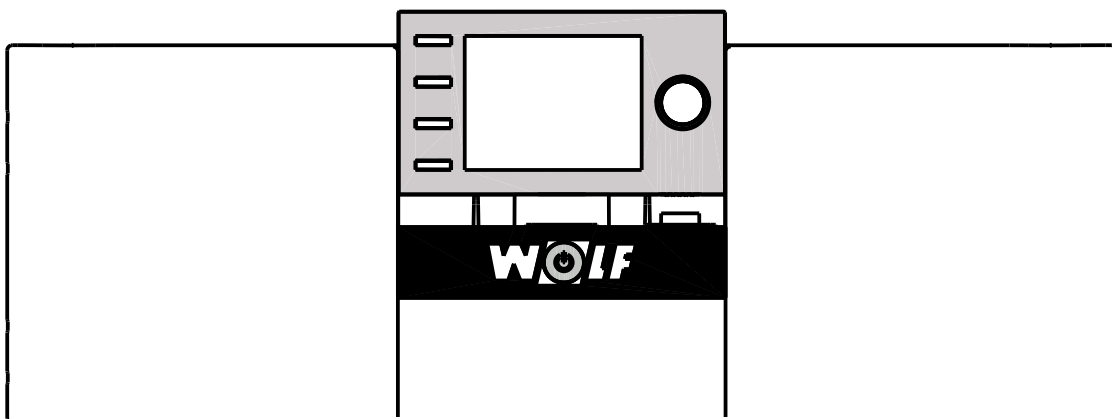
Während des Updates blinkt Display! -
Display is blinking during update!

Während des Updates nicht herausziehen! -
Do not remove during update!

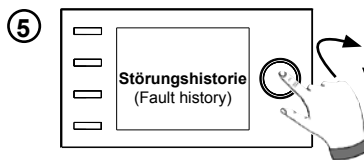
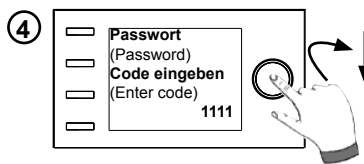
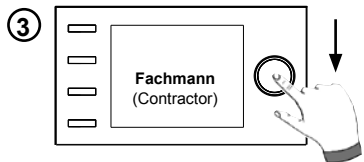
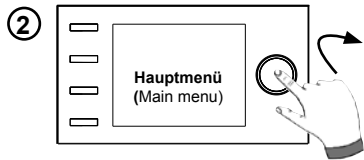
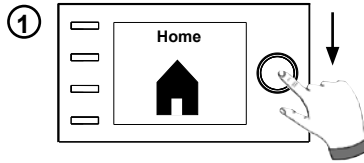


Version FW x.xx = ✓



10**11****12**

13



⑥

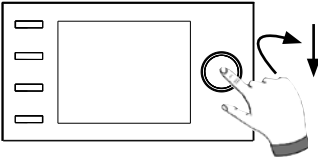


⑥



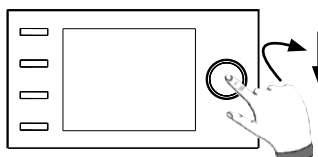
14 Grundeinstellungen / Basic Settings

Einstellungen Heizkreis - Default settings for heating circuit	Sparfaktor / Tagtemperatur - Economy factor / Day temperature	
	Raumeinfluss - Room influence	
	Winter-/ Sommer Umschaltung - Winter/summer changeover	
	ECO/ABS	
Einstellungen Mischerkreis 1 - Default settings for mixer circuit 1	Sparfaktor / Tagtemperatur - Economy factor / Day temperature	
	Raumeinfluss - Room influence	
	Winter-/ Sommer Umschaltung Winter/summer changeover	
	ECO/ABS	




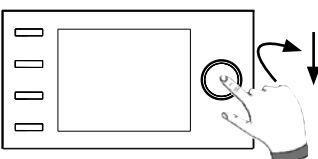
15

Zeitprogramm	Tag	Schaltzeit	HK		Mischer		Warmwasser		Zirkulation		
			EIN	AUS	EIN	AUS	EIN	AUS	EIN	AUS	
frei programmiertes Zeitprogramm	Mo	1									
		2									
		3									
Freely programmed time program	Di	1									
		2									
		3									
	Mi	1									
		2									
		3									
	Do	1									
		2									
		3									
	Time program	Mo	1								
			2								
			3								
Tu		1									
		2									
		3									
We		1									
		2									
		3									
Th		1									
		2									
		3									



16

Parameter	Werkseinstellung - Factory setting	
	Anlage - System	
A00	4 K/K	
A04	3 h	
A07	Aus - OFF	
A09	+2 °C	
A10	0	
A11	Aus - OFF	
A12	-16 °C	
A13	45 °C	
A17	30 000	
A18	50	
A23	18:00	



17

Heizkurve - Heating curve	Heizkreis - Heating circuit	Mischer 1 - Mixer circuit 1	Mischer 2 - Mixer circuit 2
Sockeltemperatur - Low end temperature			
Startpunkt Heizkurve - Heating curve start point			
Normaußentemperatur - Standard outside temperature			
Vorlauftemperatur - Flow temperature			

